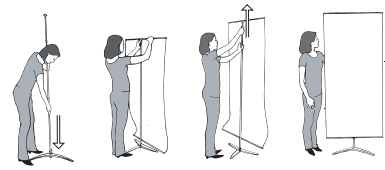


# SMARTSTAND



SmartStand is a flexible marketing display with a wide range of uses. The adjustable telescopic construction makes it quick and easy to vary the height and adapt the size of the image to suit your specific requirements. You can use it as a single or a doublesided display, allowing you to double the impact in a snap whenever needed.

SmartStand is attractively designed and takes up very little floor space. It is easy to assemble and is lightweight and comes in a padded nylon carry bag. SmartStand helps you bring your message to wherever your target audience and is available with or without lighting. With our optional clip that snaps into the top profile, the unit can be hung in windows, on the wall or from the ceiling.

## INCLUDED

SmartStand base, graphic, telescopic pole, and nylon carrying bag

## VISIBLE SIZES

Widths: 19-11/16", 23-5/8", 27-9/16" and 31-1/2"

Height: Adjustable 33-7/16" - 82-5/8"

## GRAPHIC CHOICES

Digital Photo Graphic  
Direct Digital (textiles, vinyl, specialty)  
Direct Digital (rigid substrates)  
Dye-Sub (fabrics)

## ADDITIONS

Spotlight - 50W (US standard)